



SERIES 700 MANUAL

PAINTED STEEL

The manual hose reels are a handy and easy answer to the problem of hose management. Given their simple operation, they are practically maintenance free.

In accordance with directive



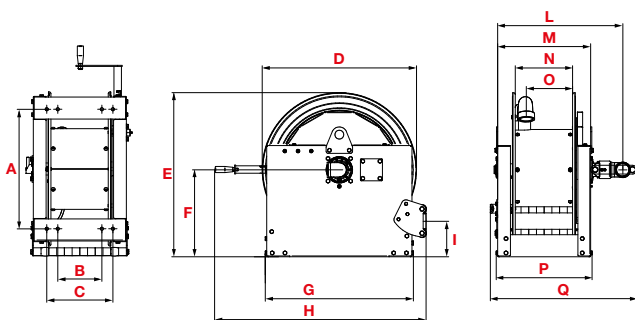
Note: All the hose reels in the table are without hose

	width 270 mm	width 410 mm	width 550 mm	width 690 mm	Connection	
					inlet	outlet
20 bar Air - Water Diesel fuel - swivel joint aluminium - seals in Viton®	7721001.100	7741001.100	7751001.100	7771001.100	2"	2"
70 bar Oil and allied products - swivel joint in carbon steel - seals in Viton®	7721001.400	7741001.400	7751001.400	7771001.400	2"	2"

DRUM CAPACITY

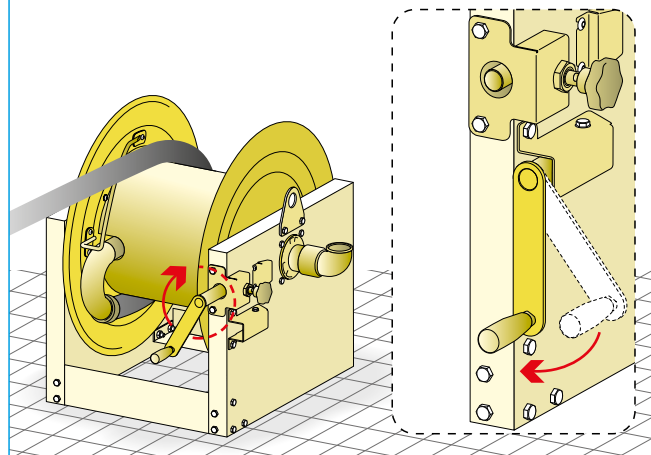
Ø HOSE	Ø HOSE EXT.	L270	L410	L550	L690
3/8"	17 mm	160 m	290 m	420 m	550 m
1/2"	20 mm	110 m	180 m	280 m	350 m
3/4"	27 mm	65 m	120 m	180 m	244 m
1"	34 mm	30 m	60 m	100 m	134 m
1.1/4"	43 mm	20 m	35 m	60 m	84 m
1.1/2"	50 mm	15 m	30 m	50 m	75 m
2"	63 mm	10 m	20 m	30 m	43 m

OVERALL DIMENSIONS



Manual hose reel

The practical handle, connected to the external rack allows easy winding of the hose at the same time controlling its positioning on the drum. There is also an easy allocation where the handle can be stored during the un-winding operation.



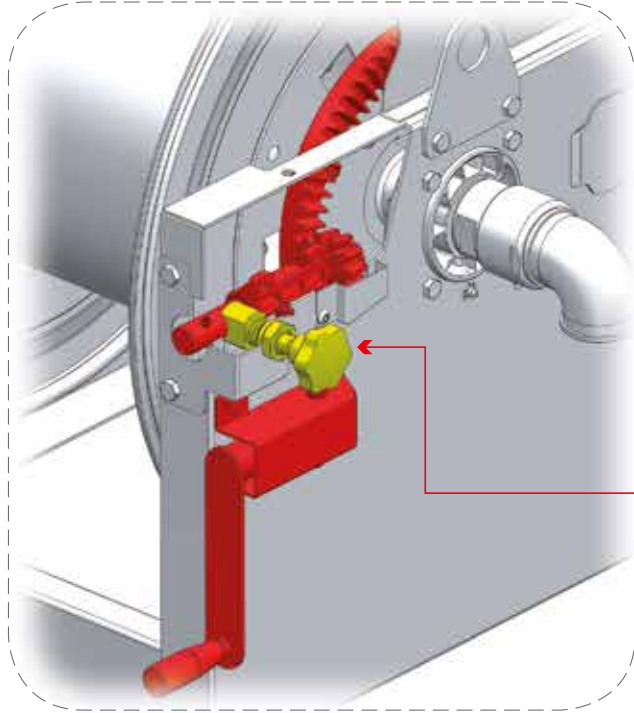
Art.	A	B	C	D	E	F	G	H	I	L	M	N	O	P	Q	1-m³	Kg
L 270	542	200	300	700	760	410	672	920	160	570	422	260	210	435	640	0,53	85
L 410	542	340	440	700	760	410	672	920	160	712	562	398	350	575	735	0,63	96
L 550	542	480	580	700	760	410	672	920	160	850	705	538	490	717	875	0,73	103
L 690	542	620	720	700	760	410	672	920	160	990	842	680	630	855	1060	0,82	119



Technical characteristics handle - clutch

Position of handle with clutch

The clutch is indispensable for regulating the hose unwinding speed and preventing the drum from turning empty due to inertia. The hose reel comes with the winding handle and clutch in the standard position as shown in the photo opposite.

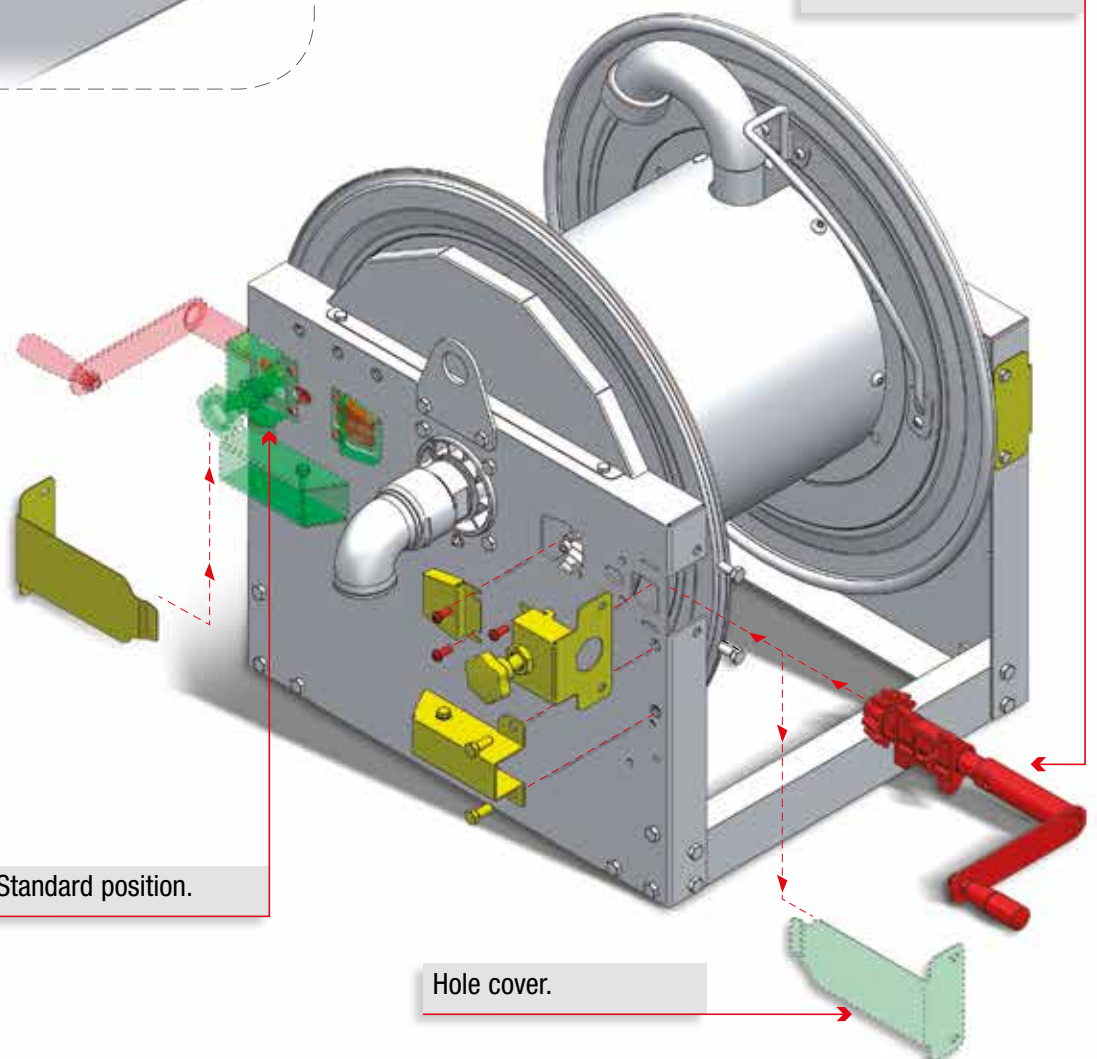


The clutch in POM, which acts on the handle (to be used only during unwinding), creates the necessary friction on the pinion, for regulating hose unwinding speed.



Shifting the handle with clutch

If required by hose reel use, the handle and clutch can be shifted from the standard position indicated above to the position shown in the figure opposite, by means of two simple operations.



New position.

Standard position.

Hole cover.